

GUSS® Connection Guide

Quick Reference Guide

GUSS® autonomous spraying systems integrate with John Deere Operations Center™ to automatically sync spray application data from your GUSS™ fleet. This integration enables centralized data management and powerful analysis tools.

1 Integration Benefits

Connecting GUSS® to John Deere Operations Center™ provides several key advantages:

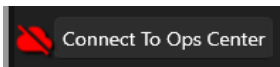
- Precise spray records automatically synced to John Deere Operations Center™
- Manage GUSS™ and John Deere equipment together in one platform
- Access Field Analyzer and Machine Analyzer tools for data-driven insights
- Hourly data sync keeps your records current

2 Establishing the Connection

Follow these steps to connect GUSS® to your John Deere Operations Center™ organization:

Step 1: Open GCC Settings

In GUSS® Commander, navigate to **Settings** and locate the **Connect To John Deere Operations Center™** button.



Step 2: Sign into John Deere

Sign into John Deere Operations Center™ with your credentials and grant GUSS® access to your organization.

The screen shows the John Deere logo at the top. Below it is a "Sign In" section with a "Username" label and a text input field. A yellow "Next" button is below the input field. At the bottom, there are links for "Forgot Username or Password" and "Create New Customer Account". A footer note states: "Your use of this account is governed by our Terms of Use and Privacy Notice. 24 to support launch of service into several countries."	The screen shows the John Deere logo at the top. Below it is a section titled "GUSS - Automated Spray Data Sync to Operations Center" with a subtext "wants to access". A yellow button with a question mark icon is below. Under "Allowing access will share", there are two checked items: "files" (Ability to access and exchange files between systems) and "ag3" (Ability to edit and delete locations, products, and production data). At the bottom are yellow "Cancel" and grey "Allow Access" buttons.
--	---

Step 3: Select Your Organization

Select the organization you want to connect with GUSS® from the available list, then click Save.

Connect with GUSS - Automated Spray Data Sync to Operations Center

Select which organizations and partners that you would like GUSS - Automated Spray Data Sync to Operations Center to access by turning access on and off

Organization

GUSS Automation

Search

✓

Name

✓

GUSS Automation

Have questions about Connections?

What does making a software connection mean for my organization?

Who has access to an organization's data?

How do I manage a software application's access to an organization's data?

What does this mean for organizations I am partnered with?

What is the difference between a Partnership and a Software Connection?

Remove Connection

Cancel

SAVE

Step 4: Confirm Connection

The **Connect To John Deere Operations Center™** button in GCC should now display a **green checkmark cloud icon**, indicating a successful connection.

This green icon confirms your GUSS® account is successfully connected to John Deere Operations Center™. If you see a blank page after clicking the connection button, this green indicator is how you know the connection worked properly.

A dark rectangular button with a green icon on the left and the text "Connect To Ops Center" on the right. The icon is a green cloud shape with a white checkmark inside.

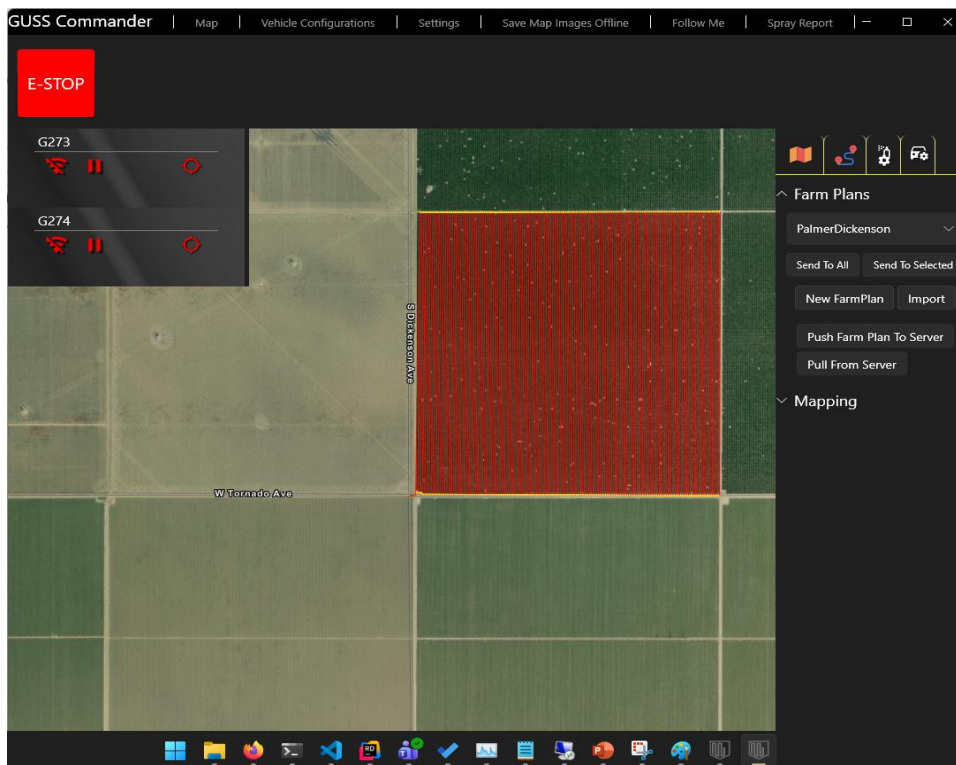
Public

3 Syncing Farms and Fields

GUSS® farm plans must sync with John Deere Operations Center™ before spray data can be automatically pushed.

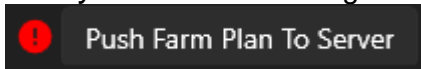
Step 5: Push Farm Plan to Server

Load your farm plan in GUSS® Commander and press **Push Farm Plan To Server**.

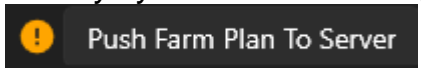


Important Notes:

- **One-Time Setup per Organization:** You do not need to run this process on each GUSS® laptop. Once a farm plan has been pushed to the server, other users can pull from the server to receive the updated farm plan.
- **When to Re-Sync:** The farm plan only needs to be synced if new fields have been added. Changes to roads, no-spray zones, or caution points do not require re-syncing.
- **Sync Status Indicator:** An icon next to the "Push Farm Plan To Server" button shows the current sync status of your farm plan:
 - *Not Synced* - Error/warning icon indicates no fields have been synced



- *Partially Synced* - Partial/warning icon indicates some fields still need syncing

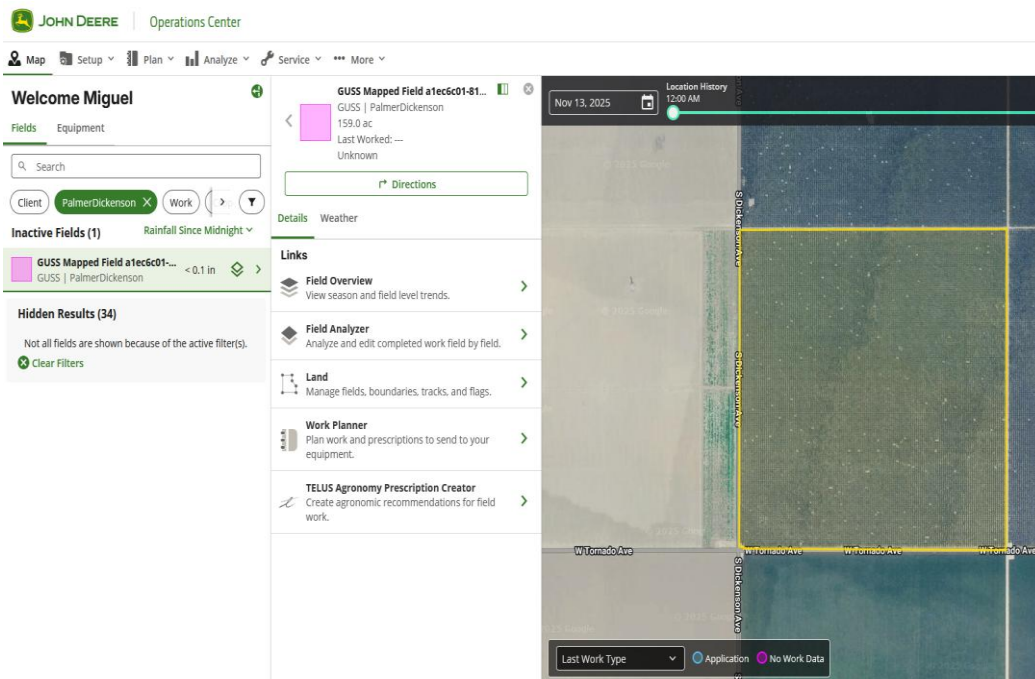


- *Fully Synced* - Success/checkmark icon confirms all fields are synced



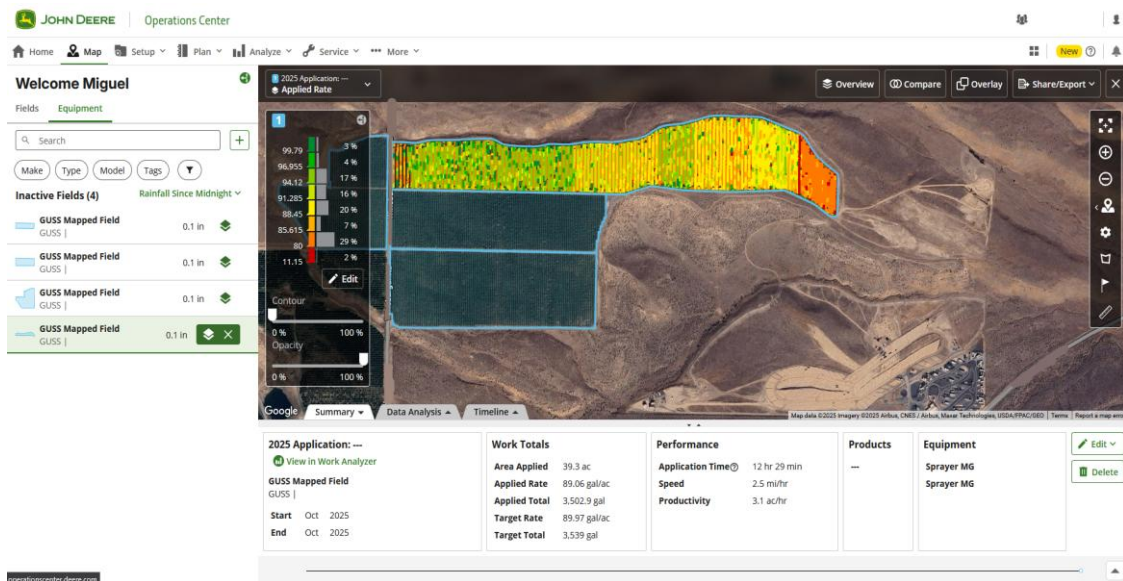
Step 6: Confirm Sync in John Deere Operations Center™

Any fields from the synced farm plan that are not already in John Deere Operations Center™ will now be available in your account.



4 Analyzing Spray Data

As spray data is synced hourly, you will be able to perform field-by-field analysis using the powerful tools in John Deere Operations Center™.



Available Analysis Tools:

- Field Analyzer – View and analyze completed work field by field
- Work Analyzer – Analyze and create reports for completed work across multiple fields
- Field Overview – View season and field level trends
- Work Totals – Area applied, gallons used, application rates, and more

For additional support, contact your GUSS® representative.